

Sea Railings Condition Report

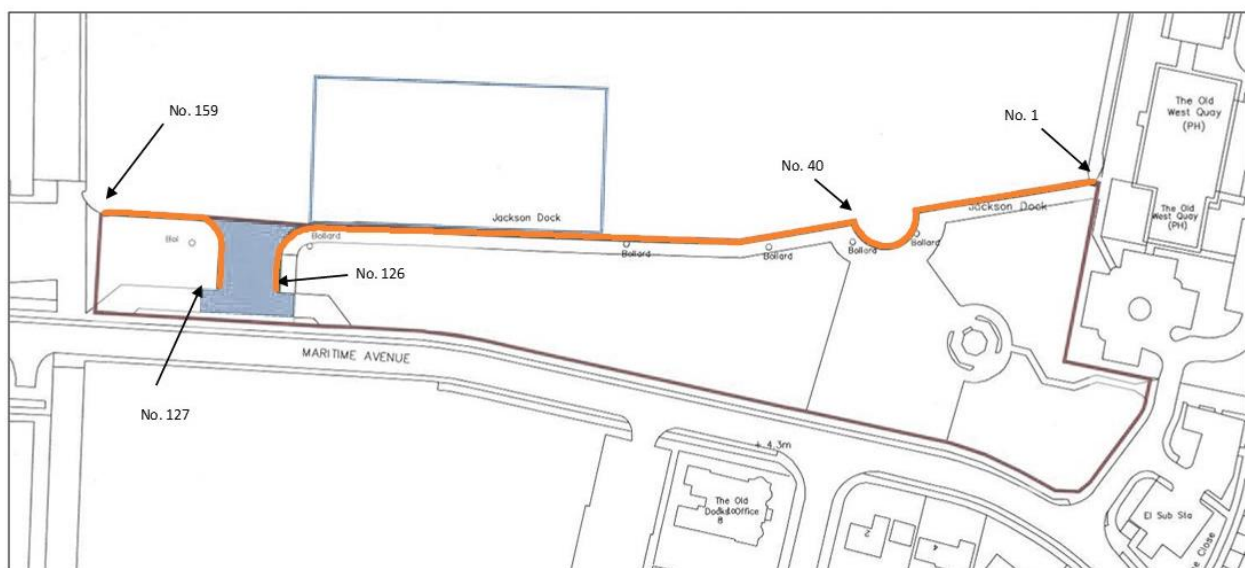
Produced by: R James & R Adamson

On behalf of: NMRN Hartlepool

Date produced: 04/12/20

Location

The map below shows the location of the sea railings that form this works package. The full extent is shown in orange and the numbers correspond to the condition table in this report.



Condition Table

The purpose of the condition table below is to give an indication of the extent of the work required to the railings and posts in particular but tenderers are asked to carry out their own survey of the work and proposals should address and provide costs for the following:

- All railings and posts to be brought up to standard either by refurbishment or replacement.
- Loose posts or posts that become loose through carrying out the work, also to be addressed.

To summarise the table, there are a total of 85 rails highlighted as missing or in need of replacement. A further 9 sections require railings to be installed in place of existing chains. NMRN estimate that 234 rails are heavily corroded and approximately 137 need refurbishing and/or repainting. All 159 posts need a degree of attention in terms of painting or refurbishment in addition various posts which are loose and/or concrete underneath corroded (estimated to be up to 12). The posts have varying degrees of corrosion (see Appendix 2) and cement fillet needs to re-applied in some cases.

The key to the condition table is as follows:

ID:	Description
P	Paint- Mild corrosion / could be repainted
C	Currently chained but to be replaced with railings
RF	Refurbish - Mild to medium corrosion / could possibly be repainted
F	Fine- recently fitted as new to replace missing section
?	Still solid, however heavily corroded, missing part of weld, possibly could be repaired but would need grinding back to inspect first.
M / R	Missing / Replace
(Blank)	Not recorded

Tenderers should take particular note of railings 27 to 40 which are currently curved rather than straight.

Posts 25-26 and railings 24-26 have recently been replaced as an urgent repair and do not require any work.

Bay number	Bay Post	Section area			Notes
		Top	Middle	Bottom	
1	RF	RF	R	R	
2	RF	RF	RF	RF	
3	RF	RF	RF	RF	
4	RF	RF	R	M	
5	RF	R	M	RF	
6	RF	C	C	C	Replace chains with railings (curved section)
7	RF	RF	R	RF	
8	RF	R	R	R	
9	RF	R	RF	RF	
10	RF	R	RF	RF	
11	RF	RF	RF	RF	
12	RF	R	RF	M	
13	RF	R	RF	R	
14	RF	R	R	RF	
15	RF	RF	RF	RF	
16	RF	R	R	RF	
17	RF	RF	R	RF	
18	RF	R	RF	RF	
19	RF	R	R	R	
20	RF	R	RF	RF	
21	RF	R	RF	RF	
22	?	R	R	R	Post loose
23	RF	R	RF	M	Post loose
24	RF	F	F	F	
25	F	F	F	F	

26	F	F	F	F	
27	RF	RF	RF	RF	Right angled section
28	RF	R	RF	RF	
29	RF	C	C	C	Replace chains with railings
30	RF	R	M	M	30 - 40. This curved railing surrounds stone steps leading to the water. All rail sections need replacing, including replacing chains with rails.
31	RF	M	M	M	
32	RF	M	M	M	
33	RF	R	M	M	
34	RF	M	M	M	
35	RF	RF	M	M	
36	RF	R	M	M	
37	RF	R	M	M	
38	RF	C	C	C	Replace chains with railings

Bay number	Bay Post	Section area			Notes
		Top	Middle	Bottom	
39	?	M	RF	R	Loose post – Right angle railings
40	?	RF	RF	RF	
41	?	?	P	P	
42	?	?	R	?	
43	?	?	?	?	
44	?	?	?	?	
45	?	?	?	R	
46	?	?	?	?	
47	?	?	?	?	Loose post
48	?	?	?	?	
49	RF	?	?	P	Loose post
50	RF	?	?	?	
51	RF	?	?	P	
52	RF	?	?	?	
53	RF	?	P	P	
54	RF	?	?	?	Loose post
55	RF	R	P	?	
56	RF	R	R	R	Curved section
57	RF	?	?	R	
58	RF	?	R	?	
59	RF	?	?	?	
60	RF	?	?	R	
61	RF	?	R	?	
62	RF	?	?	P	
63	RF	?	?	R	

64	RF	?	R	R
65	RF	?	R	?
66	RF	?	R	?
67	RF	?	?	?
68	RF	?	?	?
69	RF	?	?	?
70	RF	?	P	P
71	RF	?	?	?
72	RF	?	?	?
73	RF	?	P	P
74	RF	?	?	?
75	RF	?	P	P
76	RF	?	?	P
77	RF	?	?	?
78	RF	?	?	R

Bay number	Bay Post	Section area			Notes
		Top	Middle	Bottom	
79	RF	?	?	?	
80	RF	?	?	?	
81	RF	?	?	?	
82	RF	?	?	?	
83	RF	?	?	?	
84	RF	?	?	?	
85	?	?	?	?	
86	?	?	?	?	
87	RF	?	?	?	
88	RF	?	?	?	
89	RF	M	M	M	Temporary chains - replace with railings.
90	RF	?	?	?	
91	RF	R	?	?	
92	RF	?	?	?	
93	RF	R	?	?	
94	RF	?	?	R	
95	?	?	?	?	
96	RF	R	?	?	
97	RF	?	?	?	
98	RF	?	?	?	
99	RF	?	?	?	
100	RF	?	?	?	
101	RF	R	?	?	
102	RF	?	?	?	

103	RF	?	?	?
104	RF	?	R	?
105	RF	?	?	?
106	RF	?	?	?
107	RF	?	?	?
108	RF	?	?	?
109	RF	?	?	?
110	RF	?	?	?
111	RF	?	?	?
112	RF	?	?	?
113	RF	R	?	?
114	RF	?	?	?
115	RF	?	?	?
116	RF	?	?	P
117	RF	?	P	P
118	RF	?	P	P
119	RF	?	?	P

Bay number	Bay Post	Section area			Notes
		Top	Middle	Bottom	
120	RF	?	P	P	
121	RF	?	P	P	
122	RF	?	P	P	
123	RF	?	P	P	
124	RF	?	P	P	
125	RF	P	P	P	
126	RF	P	P	P	
127	RF	P	P	P	
128	RF	P	P	P	
129	RF	?	P	P	
130	RF	?	P	P	
131	RF	P	P	P	
132	RF	P	P	P	
133	RF	P	P	P	
134	RF	P	P	P	
135	RF	P	P	P	
136	RF	P	P	?	
137	RF	?	P	?	
138	RF	?	?	?	
139	RF	?	?	?	
140	RF	?	?	?	
141	RF	?	?	P	
142	RF	?	?	?	
143	RF	?	?	P	

144	RF	R	?	?	
145	RF	?	?	?	
146	RF	?	?	?	
147	RF	?	P	P	
148	RF	?	?	?	
149	RF	P	P	P	
150	RF	P	P	P	
151	RF	P	P	P	
152	RF	P	P	P	
153	RF	P	P	P	
154	RF	P	P	?	
155	RF	P	?	?	
156	RF	P	P	P	
157	RF	?	?	P	
158	RF	C	C	C	Leave as is
159	RF	?	P	P	