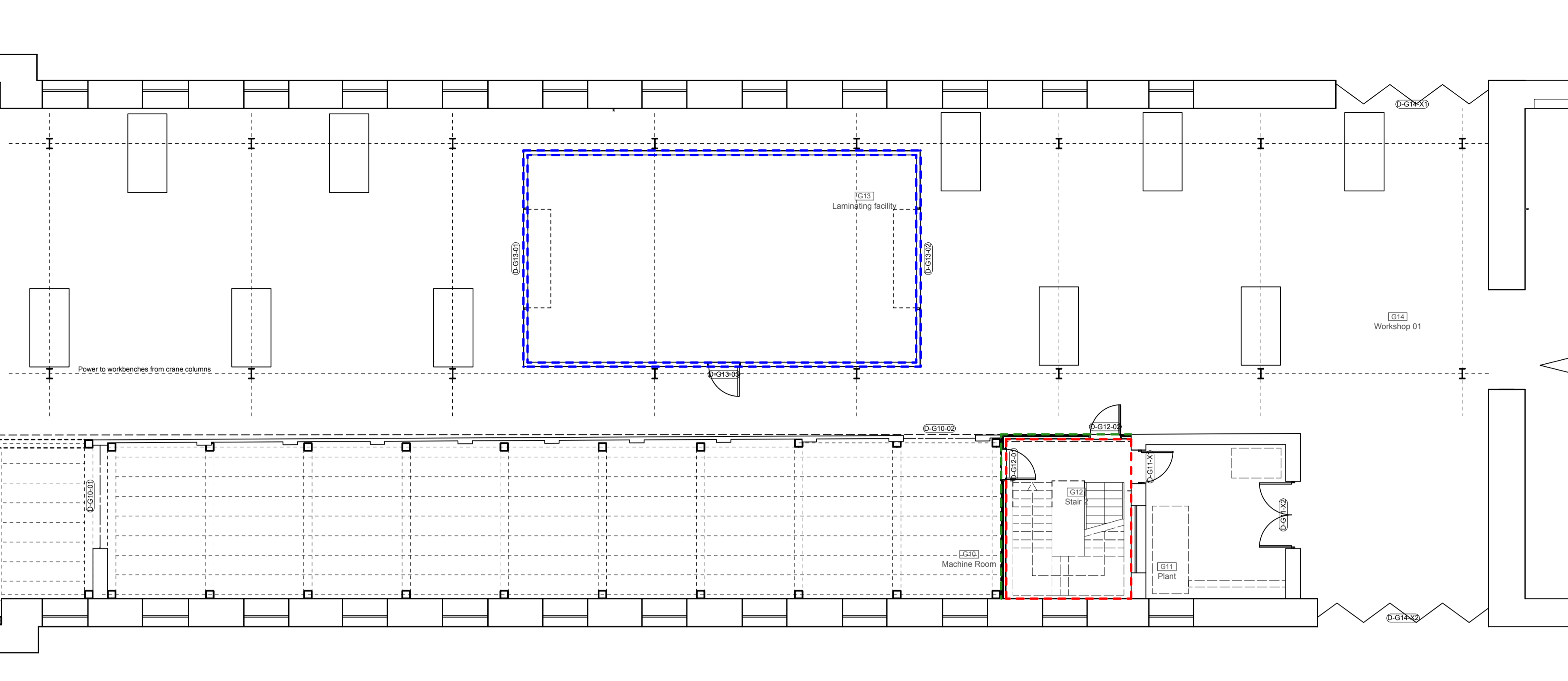
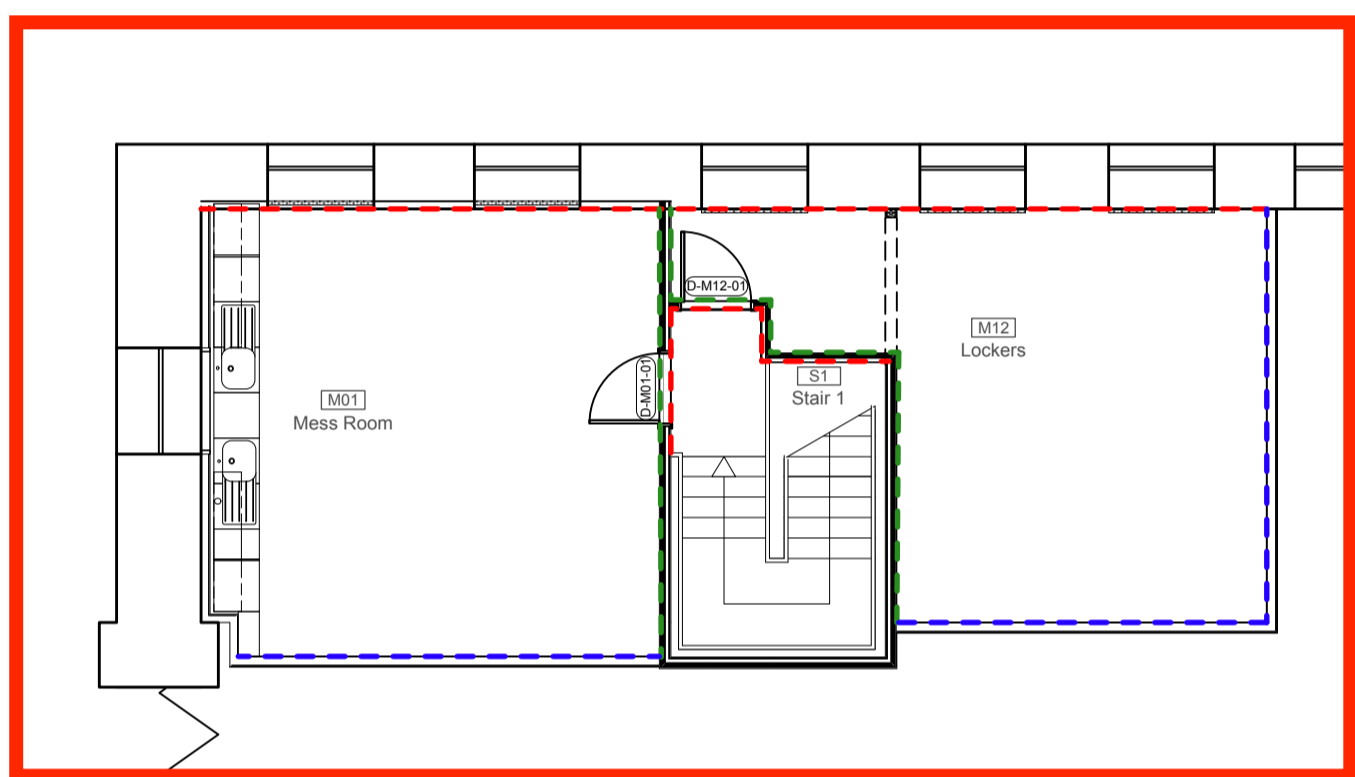


Additional Mezzanine Option

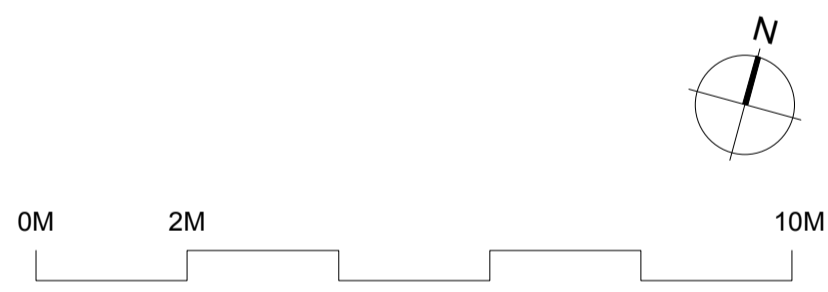
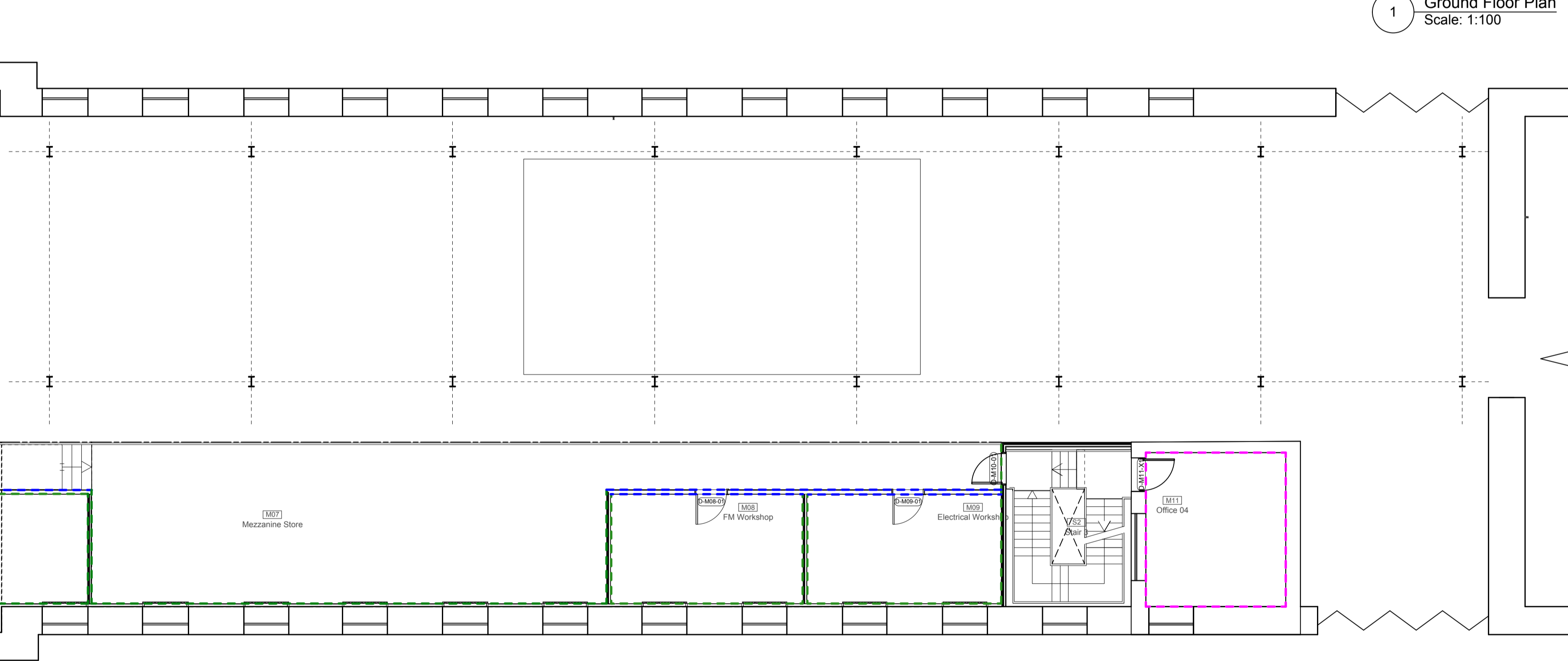


- SKIRTING FINISH**
- New recessed birch ply skirting - P20/150
 - New recessed painted softwood skirting - P20/
 - New surface-mounted painted softwood skirting - P20/
 - New surface-mounted painted softwood skirting to match/replace existing - P20/
 - Repaint existing skirting - P20/
 - Coved tile movement joint to all walls - M40/835

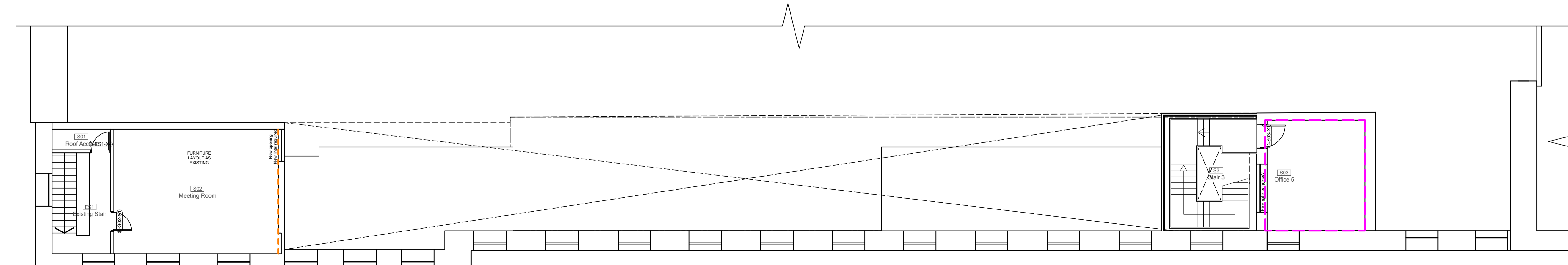
1 Ground Floor Plan
Scale: 1:100



Additional Mezzanine Option



2 Mezzanine / First Floor
Scale: 1:100



3 Second Floor
Scale: 1:100

P	02.11.2020	ST	Issued for Tender
01			
No.	Date	By	Comments

TENDER
Drawing Status

**NATIONAL MUSEUM OF THE ROYAL NAVY
HISTORIC SHIPS WORKSHOP**
Dannatt, Johnson Architects
Unit 1 The Wireworks, 77 Great Suffolk Street, London SE1 0BU
Telephone (020) 7357 7100 Fax (020) 7357 7200

Drawing Title
Proposed Bay 1 - Skirting Finishes

Drawing Number
605b-WD-13-001

Drawn	Checked	Scale	Date	Revision
ST	DJ	1:100@A1	Aug 2020	P01