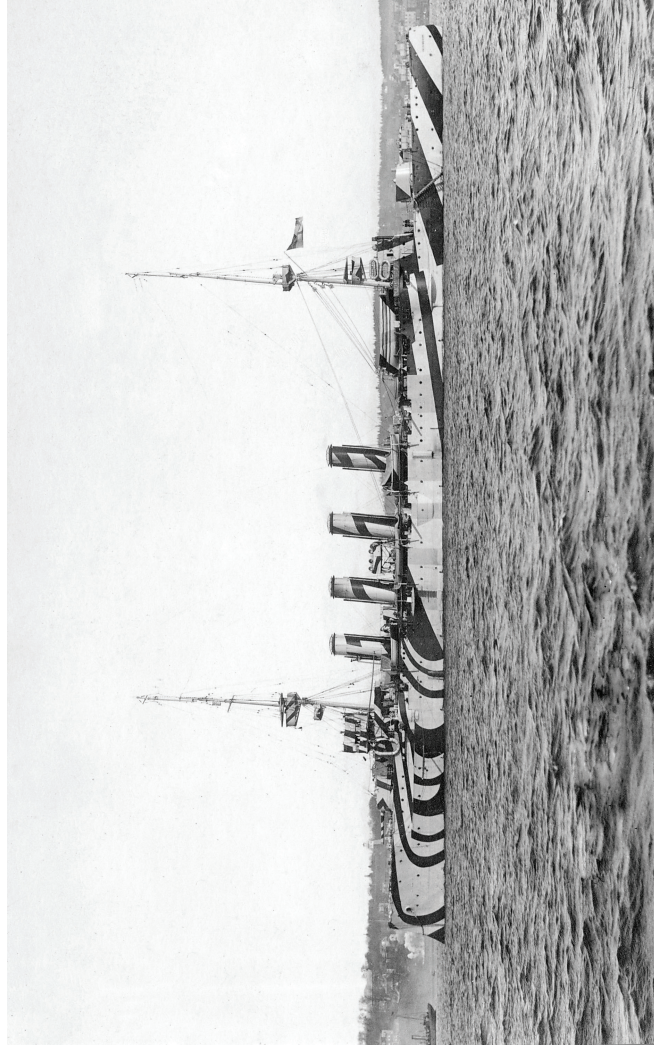




HMS CAROLINE
BELFAST

DAZZLE HMS Caroline

Dazzle paint was used during the First World War to trick, confuse and bewilder the enemy. Bold colours, strong lines and geometric patterns were used in Dazzle schemes. Create your own Dazzle design.



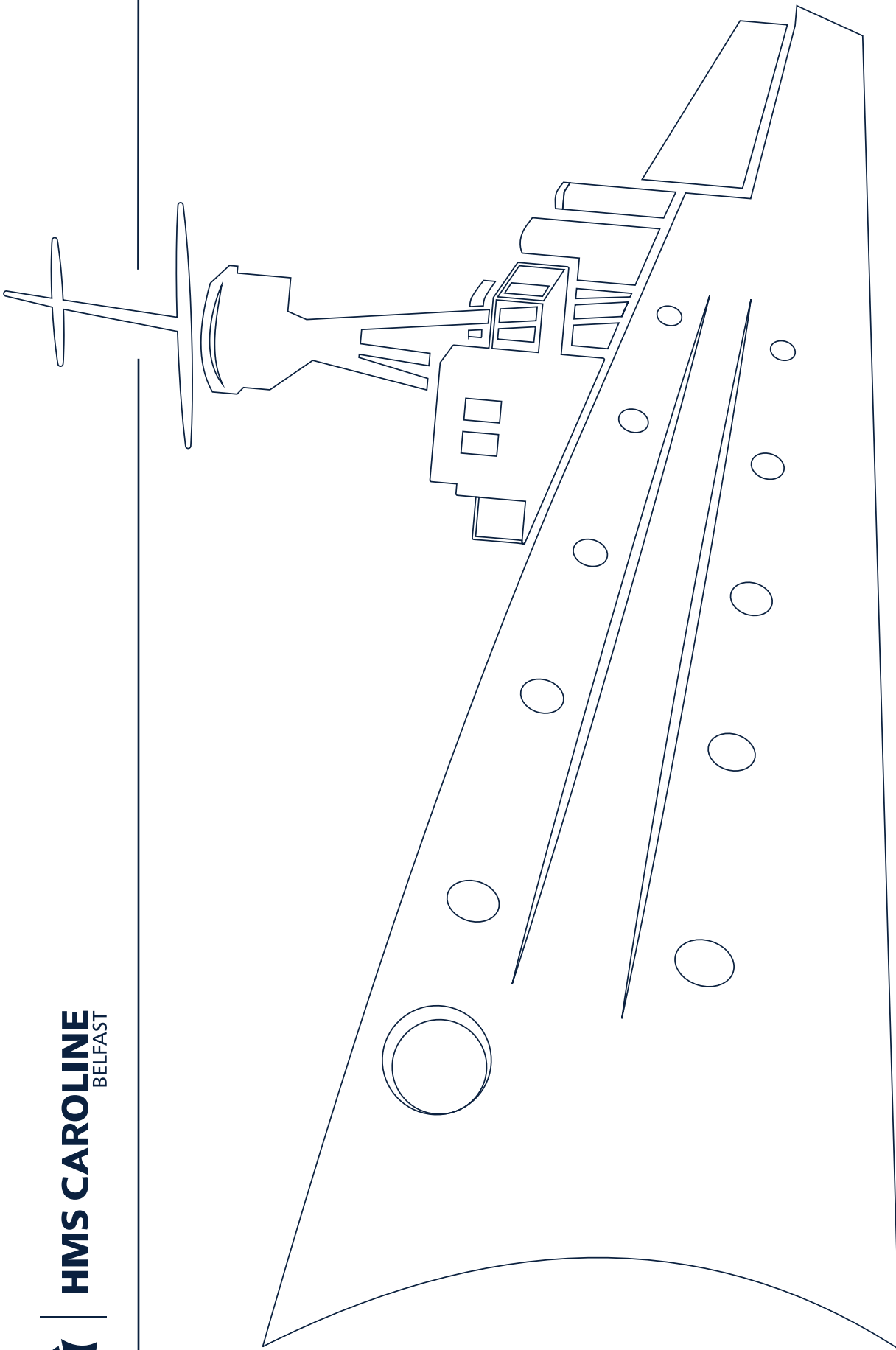
Above: Example of the strong geometric shapes often used in dazzle camouflage.



Left: In 1915 HMS Caroline was painted with Dazzle-like patterns.



HMS CAROLINE BELFAST



THE
NATIONAL
MUSEUM



Supported by
The National Lottery
through the Heritage Lottery Fund

